

EARTHWORM

FIRST FLOOR

FIRST FLOOR BED COUNT:

SINGLE: 1

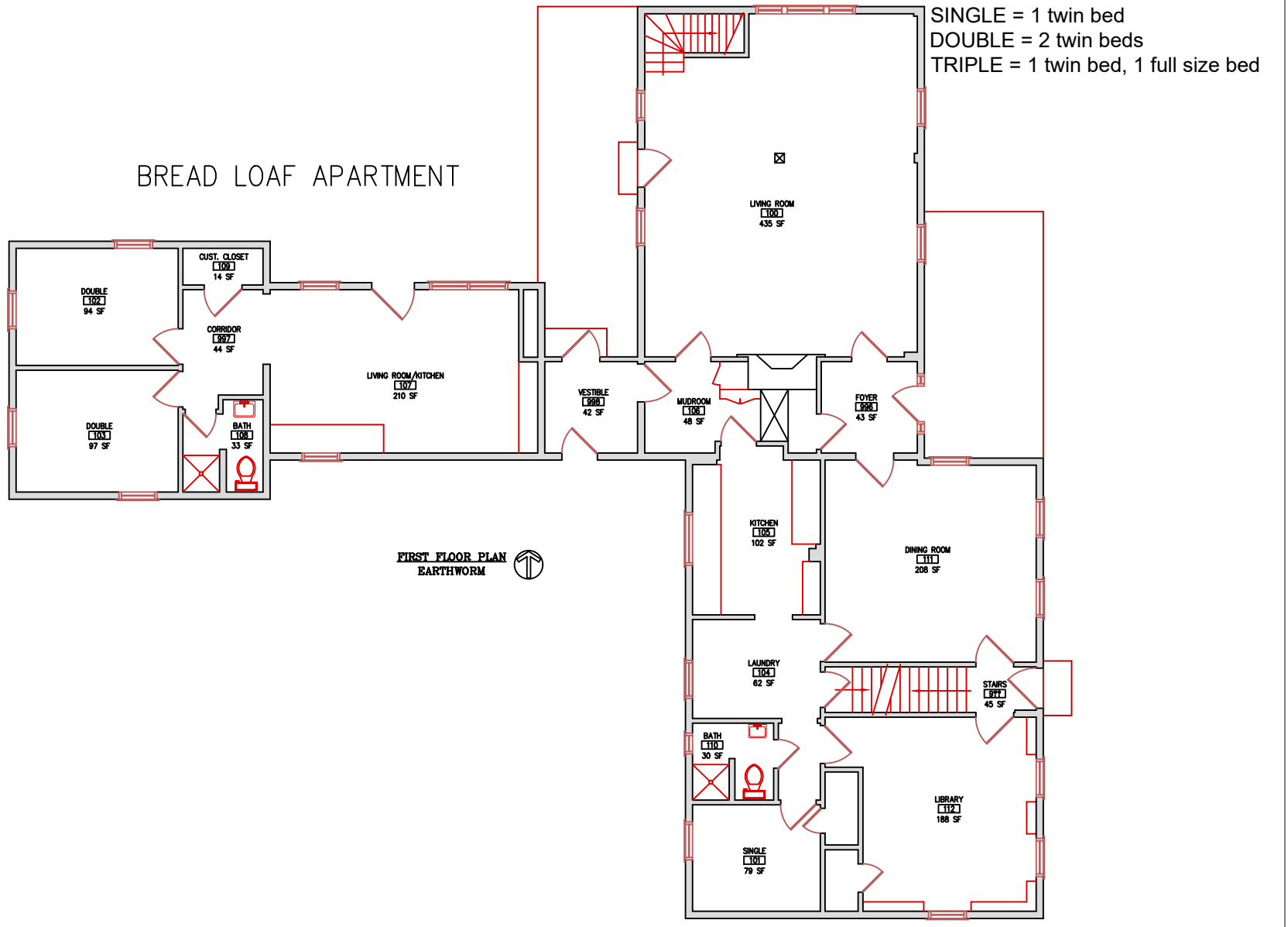
DOUBLES: 2 (4)

TOTAL CAPACITY = 5

Total Capacity (1st & 2nd Floors) = 12

Total Capacity (1st & 2nd Floors if 2 in FULL beds) = 13

BREAD LOAF APARTMENT



EARTHWORM

SECOND FLOOR

SECOND FLOOR BED COUNT:

SINGLE: 1

DOUBLES: 2 (4)

TRIPLES: 1 (2 or 3)

TOTAL CAPACITY = 7 (8 if 2 in full bed)

Total Capacity (1st & 2nd Floors) =

Total Capacity (1st & 2nd Floors if 2 in FULL beds) =

SINGLE = 1 twin bed

DOUBLE = 2 twin beds

TRIPLE = 1 twin bed, 1 full size bed

